

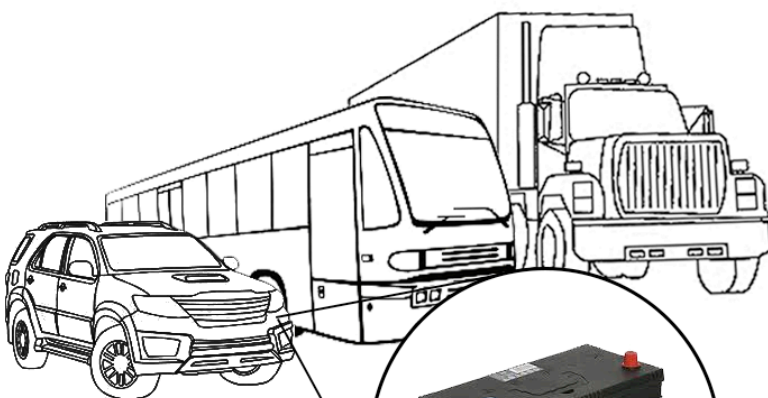
## SW-005 Unmanaged Ethernet Switch 5 Ports

# SW-005

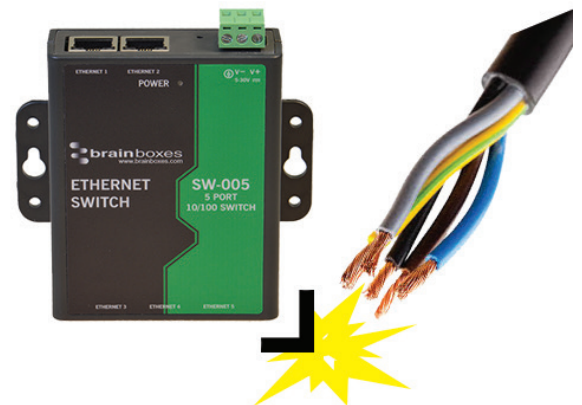
- 5 Port 10/100 Mbs Ethernet Switch
- Power inputs: +5V to +30V DC
- Compact design with integral wall mount
- No software required - Simply plug in and connect
- Integral wall mount or optional DIN rail mount
- Connection speed and activity LEDs on each Port



Switches control the flow of network traffic based on the address information in each packet. A switch learns which devices are connected to its ports (by monitoring the packets it receives), and then forwards on packets to the appropriate port only. This allows simultaneous communication across the switch, improving bandwidth.



+5 to +30 Volt Power Input enables the device to be run from a standard car battery - ideal for in vehicle applications



Non conducting polyamide casing prevents electrical conduction – for safer installation



## Brainboxes' Easy Wire Feature:

Removable screw terminal blocks makes wiring to power supply easier and quicker.



## Wide Range Input Power Supply:

+5VDC to +30VDC accommodates variation in the +24VDC factory floor and allows alternative power sources, such as any computer USB port.



## HP Auto MDI/MDIX crossover support

Auto-MDI/MDIX eliminates the need for cross-over cable thus reducing installation costs. All 5 Ethernet ports are Auto MDIX and so straight through or crossover Ethernet cables can be used to connect to your Ethernet devices. Easy to use.



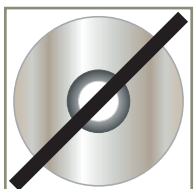
2k Byte maximum packet size – improves the efficiency of bulk data transfer and system performance

Automatic detection of data transmission speed: 10 or 100 MBps



Power consumption is optimised based on the status of the link device.

Energy detect power down for when the cable is not plugged in and power down/slow oscillator mode when the device is not in use.



## No software needed:

Simply plug any ethernet cable into one of the four Ethernet ports on the device to connect it.



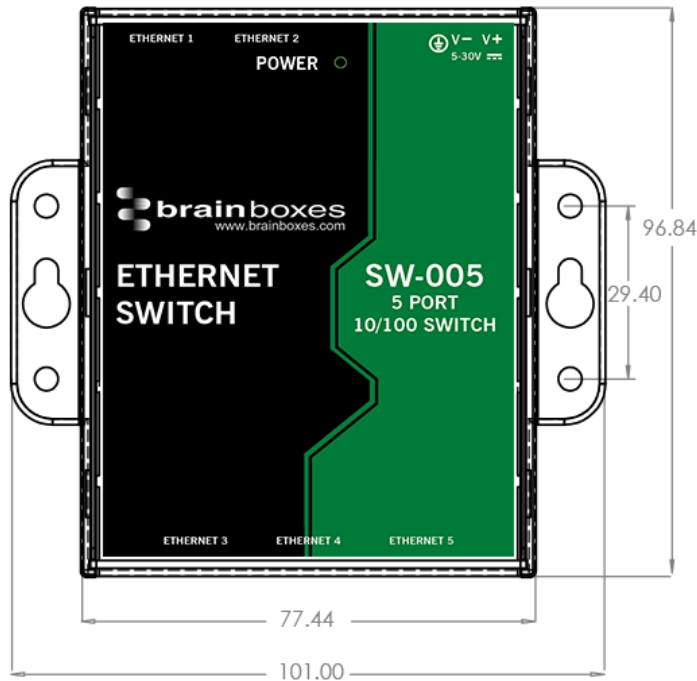
## Lifetime Warranty and Support:

We can help with every aspect of your project, from getting you up and running to custom application.

# SW-005 Unmanaged Ethernet Switch

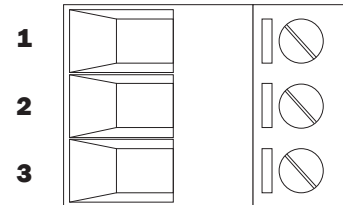
## Housing

IP-30 rated non-conducting polyamide case



## Power Terminal Pin Outs

PIN	FUNCTION
1	V+ Power
2	V- Power
3	Earth/Chassis Ground



## Ethernet Ports x4 Pin Outs

PIN	FUNCTION
1	RD+ / TD+
2	RD- / TD-
3	TD+ / RD+
4	NC
5	NC
6	TD- / RD-
7	NC
8	NC

## Connectors

Screw Terminals 3.5mm pitch, #22 - #14, 0.5mm<sup>2</sup>-2.5mm<sup>2</sup> pin power supply  
 Wire Thickness 0.150 inch, 3.81mm, 20 pins, 12+8 screw terminals, #26 - #16 AWG, 0.14mm<sup>2</sup>-1.3mm<sup>2</sup>

## Power Supply

Power Consumption 1.1 Watts Max : 220 mAmps@+5VDC/36mAmps@+30VDC  
 Power Supply input unregulated +5V to +30Volts DC, reverse polarity protection  
 Isolation 1500VRMS Magnetic isolation from Ethernet

## Environmental

Operating Temperature 0°C to +60°C  
 Storage Temperature 0°C to +70°C  
 Ambient Relative Humidity 5 to 95% (non-condensing)

## Magjack LED Information

Link/Activity LED	Solid green	Connection established
	Flashing Green	Data communication
Speed LED	Green	100Base-Tx
	Unlit	10Base-T

## Ethernet

Ethernet Port 5 x RJ45 jack, 10/100Mhz autosensing, crossover auto sensing (Auto MDIX)  
 Protection 1,500Volts magnetic isolation between I/O ports and network

# SW-005 Unmanaged Ethernet Switch

## Packaging Information

Packaging	Quick Start Guide
Device	Ethernet Switch 5 port
Packaged Weight	0.225 kg, 7.94 ounces
Packaged Dims	160x135x45 mm, 6.3x5.3x1.8 inches
GTIN Universal Code	837324009866

## Approvals

Industry Approvals	Microsoft Certified Gold Partner, WEEE, RoHS, AEO (C-TPAT)
--------------------	--



## Product Support

Warranty	Lifetime - online registration required
Support	Lifetime Web, Email and Phone Support from fully qualified, friendly staff who work in and alongside the Product Development Team



## Additional Information

OEM option	Available for bulk buy OEM
Made In	Manufactured in the UK by Brainboxes Winner 2005 European Electronics Industry Awards 'Manufacturer of the Year'
Customisable	Brainboxes operate a 'Perfect Fit Custom Design' policy for volume users. More info: sales@brainboxes.com

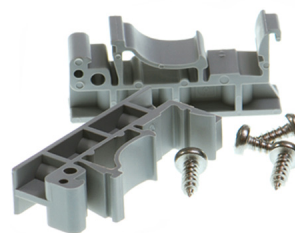
## Optional Accessory Items

### PW-600 Global Power supply



Power supply with connectors for UK, USA, EU and AUS mains socket. 'Tails' are suitable for connecting to screw terminal blocks

### MK-048 DIN Rail Mounting Kit



Suitable for attaching to SW-005 to make device clip on to a DIN rail.