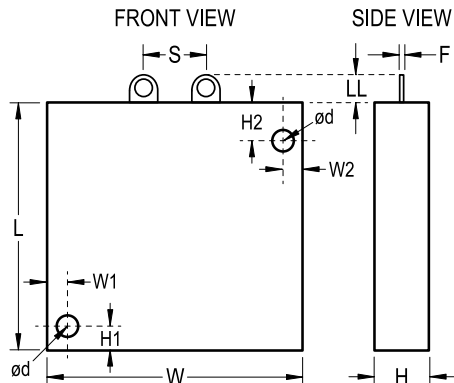


Capacitor, Tantalum, 1000 uF, +/-20% Tol, 60 V



Dimensions (mm)		
Symbol	Dimension	Tolerance
L	50.6	+/-0.38
W	52.1	+/-0.38
H	11.1	+/-0.2
F	0.81	REF
S	12.71	
LL	5.6	

Notes:

- H1: 4.5 +/-0.1, W1: 3.2 +/-0.1
- H2: 8.2 +/-0.1, W2: 4.4 +/-0.1
- D = 3.2mm REF

General Information	
Supplier:	KEMET
Application:	Military Grade/Low ESR/Low DF
Body Type:	Module
Lead Type:	2Tab
Termination Type:	Tin (Sn)
Weight:	4 g
RoHS:	Yes

Specifications	
Capacitance:	1000 uF
Tolerance:	+/-20%
Voltage:	60 VDC (85C)
Voltage:	46.8 VDC (105C)
Temperature Range:	-55/+105C
Current/Ripple Current:	16600 mAmps (40kHz 85C)
Resistance/ESR:	25 mOhms (100kHz 25C)
Failure Rate:	N/A
Leakage Current:	450 uA
Dissipation Factor:	5%

Packaging Specifications	
Package Kind:	Bulk
Package Type:	Tray
Package Quantity:	20