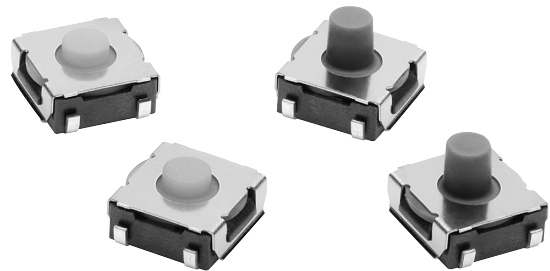


Surface-mounting Sealed Tactile Switch. Middle Stroke and Crisp Clicking Action.


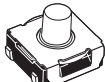


- Sealed construction conforming to IP67 (IEC 60529) provides high contact reliability in dusty environments. (* Excluding the terminal section.)
- Crisp click feeling and middle stroke with rubber plunger.
- Embossed tapping package for automatic mounting.



RoHS Compliant

Ordering Information

■ List of Models

| Type | Plunger | Height | Operating force (OF) | Plunger color | Embossed tape | |
|-------------------------|--|--------|----------------------|---------------|---------------|-------------------|
| | | | | | Model | Quantity per reel |
| 6 × 6 mm B3SL Series |  (Flat type) | 3.4 mm | 1.96 N {200 gf} | Yellow-green | B3SL-1002P | 2,000 |
| |  (Flat type) | 5.1 mm | | Gray | B3SL-1022P | 1,400 |
| |  (Flat type) | 3.4 mm | 3.5 N {357 gf} | Blue | B3SL-1005P | 2,000 |
| |  (Flat type) | 5.1 mm | | Blue | B3SL-1025P | 1,400 |

Note: Orders must be made in multiples of the minimum order. Switches are not sold individually.

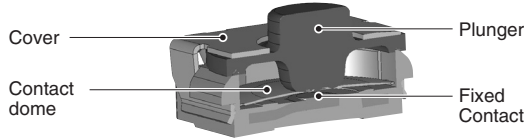
Ratings/Characteristics

| | |
|--------------------------------------|--|
| Switching capacity | 1 to 50 mA at 5 to 12 VDC (resistive load) |
| Ambient operating temperature | -25°C to +90°C at 60%RH max. (with no icing or condensation) |
| Ambient operating humidity | 35% to 85% (at 5 to 35°C) |
| Contact configuration | SPST-NO |
| Contact resistance | 100 mΩ max. (initial value) (for 1 mA at 5 VDC) |
| Insulation resistance | 100 MΩ min. (at 250 VDC) |
| Dielectric strength | 250 VAC, 50/60 Hz for 1 min |
| Bounce time | 5 ms max. |
| Vibration resistance | Destruction: 10 to 55 Hz, 1.5-mm double amplitude |
| Shock resistance | Destruction: 1,000 m/s ² {approx. 100 G} max. |
| Durability | 100,000 operations min. |
| Operating force | 30 N max. |

Operating Characteristics

| Operation type | B3SL-1002P | B3SL-1022P | B3SL-1005P | B3SL-1025P |
|----------------------|-----------------------------|--------------|---------------------------|--------------|
| Operating force (OF) | 1.96 ± 0.49 N {200 ± 50 gf} | | 3.5 ± 0.8 N {357 ± 82 gf} | |
| Releasing force (RF) | 0.35 N min. {35 gf} | | 0.5 N min. {51 gf} | |
| Pretravel (PT) | 0.3 ± 0.2 mm | 0.5 ± 0.2 mm | 0.6 ± 0.2 mm | 0.8 ± 0.2 mm |

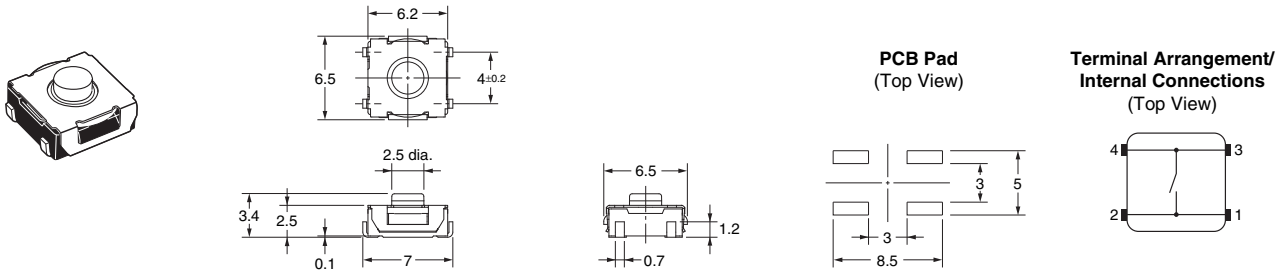
Model Structure



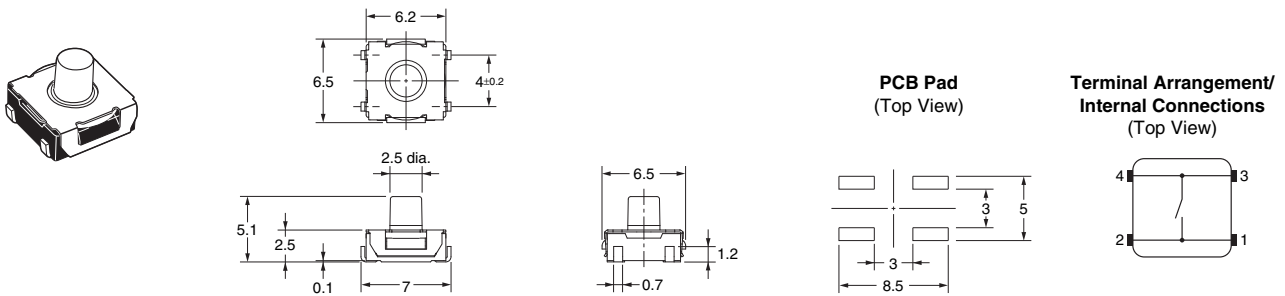
Dimensions

Note: All units are in millimeters unless otherwise indicated.

B3SL-1002P
B3SL-1005P



B3SL-1022P
B3SL-1025P



Note: Unless otherwise specified, a tolerance of ±0.2 mm applies to all dimensions.

Precautions

Be sure to read the precautions common to all Tactile Switches on pages for correct use.

ALL DIMENSIONS SHOWN ARE IN MILLIMETERS.
To convert millimeters into inches, multiply by 0.03937. To convert grams into ounces, multiply by 0.03527.