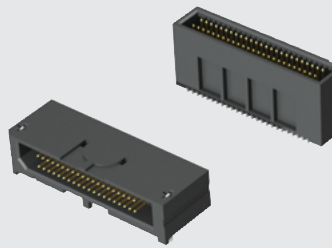


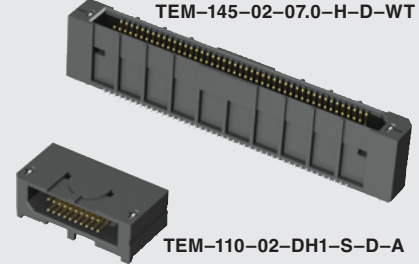


TEMS-125-02-03.0-H-D



TEM-120-02-DH1-S-D-A

TEM-145-02-07.0-H-D-WT



TEM-110-02-DH1-S-D-A

(0,80 mm) .0315"

TEM, TEMS, TEM-DH SERIES

MICRO TIGER EYE™ HEADER

TEM, TEM-DH Mates with:
SEM, SEML

TEMS Mates with:
SEMS

SPECIFICATIONS

For complete specifications and recommended PCB layouts see www.samtec.com?TEM or www.samtec.com?TEMS

Insulator Material: Black Liquid Crystal Polymer
Terminal Material: Phosphor Bronze
Plating: Au or Sn over 50µ" (1,27 µm) Ni
Operating Temp Range: -55°C to +125°C
Current Rating: 2.6 A per pin (1 pin powered per row)
RoHS Compliant: Yes

Processing:
Lead-Free Solderable: Yes
SMT Lead Coplanarity: (0,10 mm) .004" max

RECOGNITIONS

For complete scope of recognitions see www.samtec.com/quality



FILE NO. E111594

TYPE STRIP	1	NO. PINS PER ROW	02	STACK HEIGHT	PLATING OPTION	D	OPTION	OTHER OPTION
TEM = Tiger Eye™ Strip		05, 10, 15, 20, 25 30, 35, 40, 45, 50 (TEM only) (Standard sizes)		-03.0 = 6 mm Stack Height -04.0 = 7 mm Stack Height -07.0 = 10 mm Stack Height	-FG = Gold Flash -G = 10µ" (0,25 µm) Gold on contact, Gold Flash on tail -H = 30µ" (0,76 µm) Gold on contact, Gold Flash on tail		Leave blank for TEMS -A = Alignment Pin (Not available with -LC or -WT) -LC = Locking Clip (Not available with -A or -WT) (Manual placement required) -WT = Weld Tab (Not available with -A or -LC)	-K = (5,50 mm) .217" DIA Polyimide film Pick & Place Pad (Required for TEMS) -TR = Tape & Reel (Required for TEMS)

TEMS: (No. of Positions x (0,80) .0315) + (3,35) .132

TEM: (No. of Positions x (0,80) .0315) + (9,00) .354
 (No. of Positions x (0,80) .0315) + (7,00) .276

STACK HEIGHT	A	MATED HEIGHT* (WHEN MATED WITH SEM/SEMS)
-03.0	(5,610) .2209	6 mm
-04.0	(6,610) .2602	7 mm
-07.0	(9,610) .3783	10 mm

*Processing conditions will affect mated height.

28+
G b p s

EXTENDED LIFE PRODUCT
 10 year Mixed Flowing Gas with 30µ" Gold
 Call Samtec for maximum mated cycles

OTHER SOLUTIONS

- Latching option: See TEM-L1 in Discrete Wire Cable section.
- Board Stacking: See SFM, TFM Series
- Cable Assemblies: See SFSD, TFSD, SESDT Series
Contact Samtec.

ALSO AVAILABLE (MOQ Required)

- Other sizes
 - Other platings
- Contact Samtec.

Note: Some sizes, styles and options are non-standard, non-returnable.

TEM	1	NO. OF POSITIONS	02	DH1	PLATING OPTION	D	OPTION
		10, 15, 20, 25, 30, 35, 40, 45, 50 (Standard sizes)			-F = Gold Flash on contact, Matte Tin on tail -L = 10µ" (0,25 µm) Gold on contact, Matte Tin on tail -S = 30µ" (0,76 µm) Gold on contact, Matte Tin on tail		-A = Alignment Pin

TEM-DH1: (No. of Positions x (0,80) .0315) + (9,00) .354

TEM-DH1: (No. of Positions x (0,80) .0315) + (4,00) .1575

TEM-DH1: (No. of Positions x (0,80) .0315) + (7,00) .276