
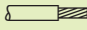
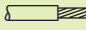
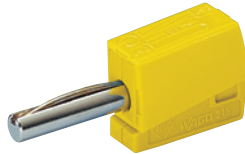
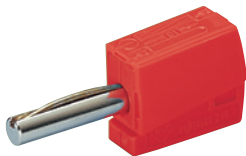


Banana Plugs (Only for Safety Extra-Low Voltage)

For sockets Ø 4 mm / 0.157 in 0.08 – 2.5 mm ² AWG 28 – 14 42 V 20 A  9 – 11 mm / 0.39 in	For sockets Ø 4 mm / 0.157 in 0.08 – 2.5 mm ² AWG 28 – 14 42 V 20 A  9 – 11 mm / 0.39 in	For sockets Ø 4 mm / 0.157 in 0.08 – 2.5 mm ² AWG 28 – 14 42 V 20 A  9 – 11 mm / 0.39 in
---	--	--

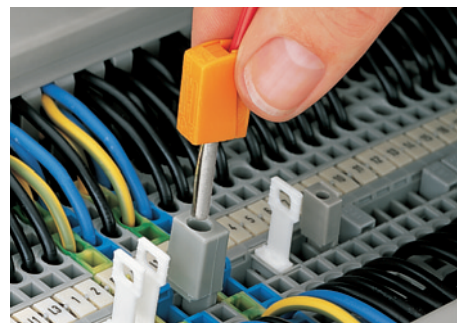


Color	Item No.	Pack. unit pcs	Color	Item No.	Pack. unit pcs	Item No.	Pack. unit pcs	
Banana plug, for sockets Ø 4 mm/0.157 in orange	215-211	50	Banana plug, for sockets Ø 4 mm/0.157 in yellow	215-511	50	Banana plugs, for sockets Ø 4 mm/0.157 in color mixed 10 each – orange, white, black, blue, yellow	215-111	50



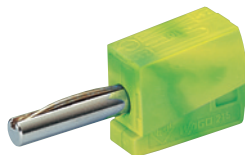
Color	Item No.	Pack. unit pcs	Color	Item No.	Pack. unit pcs
Banana plug, for sockets Ø 4 mm/0.157 in red	215-212	50	Banana plug, for sockets Ø 4 mm/0.157 in blue	215-711	50

To connect: Press button fully and insert stripped conductor into square entry hole and release.



Color	Item No.	Pack. unit pcs	Color	Item No.	Pack. unit pcs
Banana plug, for sockets Ø 4 mm/0.157 in black	215-311	50	Banana plug, for sockets Ø 4 mm/0.157 in grey	215-811	50

Banana plug used as test plug
Picture shows test adapter 209-170



Color	Item No.	Pack. unit pcs	Color	Item No.	Pack. unit pcs
Banana plug, for sockets Ø 4 mm/0.157 in green	215-411	50	Banana plug, for sockets Ø 4 mm/0.157 in green-yellow	215-911	50
white	215-611	50			

